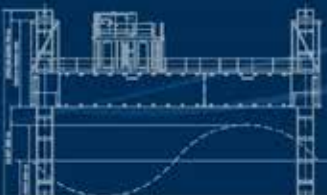


ABH

Australian Barge Hire



SEA LIFT 3

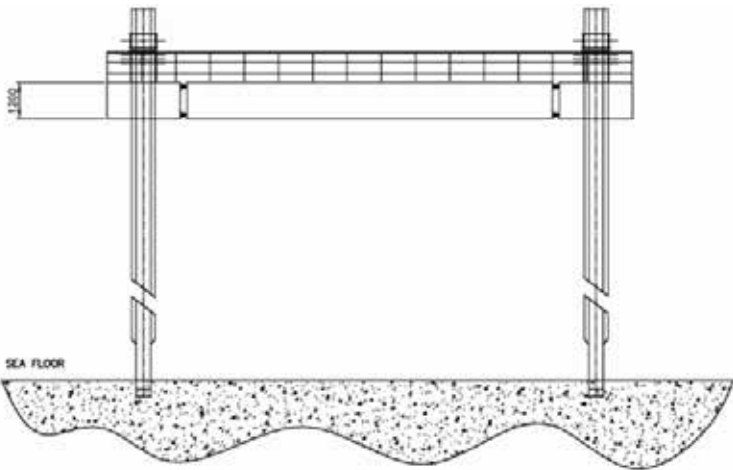
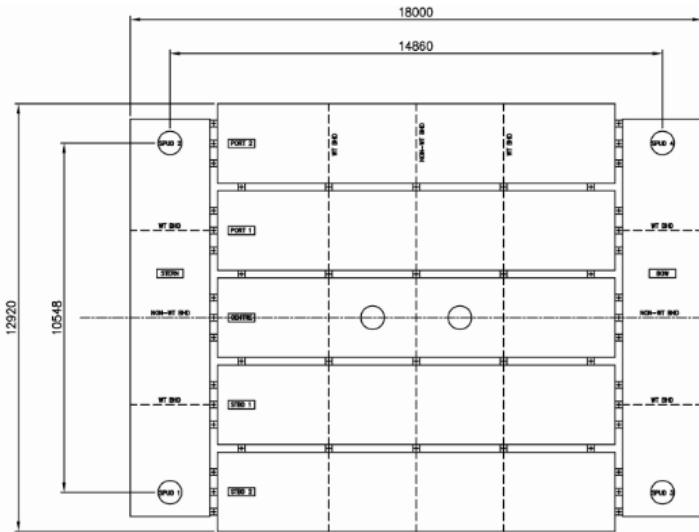


JACK-UP



BARGE SELF ELEVATING PLATFORM

SEA LIFT 3



General

Type	Jack Up Barge
Operator	Australian Barge Hire Pty Ltd
Survey	NSW Maritime 2D
Construction	Steel
Built	Australia
Road Transport	7 standard Semi Trailers, 2 extendable trailers (18m)
Working Depth	Up to 21 meters

Main Dimensions

Length Overall	17.20	meters
Beam	12.90	meters
Depth	1.20	meters
Draft	0.80	meters
Displacement	80	tonnes (unladen)

Jacking System

Jacking system	Electronic over hydraulic
Jacking Rate	10 meters per hour
Load Lift Capacity	30 tonnes
Spud Length	12,18,30 meters
Hydraulic Power Unit	HPU 5 x 30 kW

Features

- 475mm Diameter Moon Pool
- § Onboard Site Office
- § Remote controlled jacking operation
- § Remote controlled gangway access
- § Certified man riding crane
- § Environmental spill containment equipment
- § Night lights
- § Road Transportable

Operation

“Sea Lift 3” employs radio data electronic over hydraulic controls for all barge operations. “Sea Lift 3” in standard configuration has four 12,18 or 30 m spuds, one in each corner. Five air-cooled diesel power packs provide hydraulic pressure for all barge operations. A mobile control panel, linked by radio data link to the control unit, enables the operator to easily sight all operations.

Electronic interlocks and sensors provide the operator with status indications at the control panel and prevent inadvertent operation at the spud control.

Australian Barge Hire

Unit 2D 1-3 Endeavour Rd, Caringbah NSW 2229
Phone: 02 9531 2900 Email: info@australianbargehire.com

